



Lightbox, Blue, Media City UK, Salford

£1,100 PCM

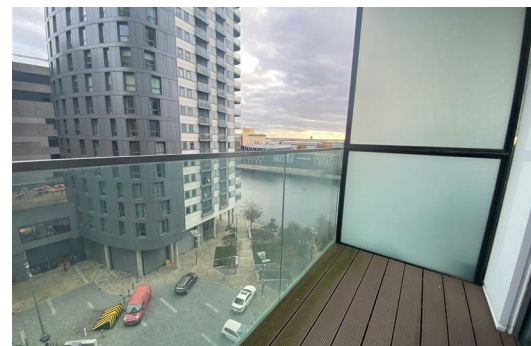
This 6th-floor one bedroom apartment has become available, situated in a development unlike any other. The Lightbox development is set to offer 238 apartments across 19 storeys. Here, you will have access to some breath-taking views across MediaCityUK, the waterfront and Manchester city skyline.

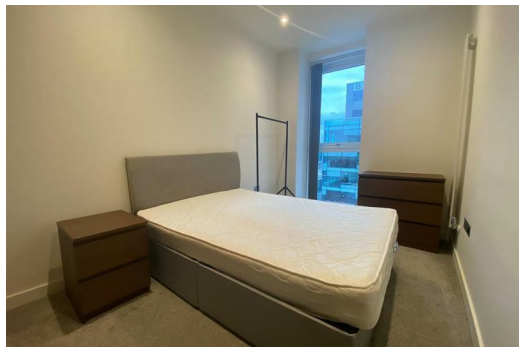
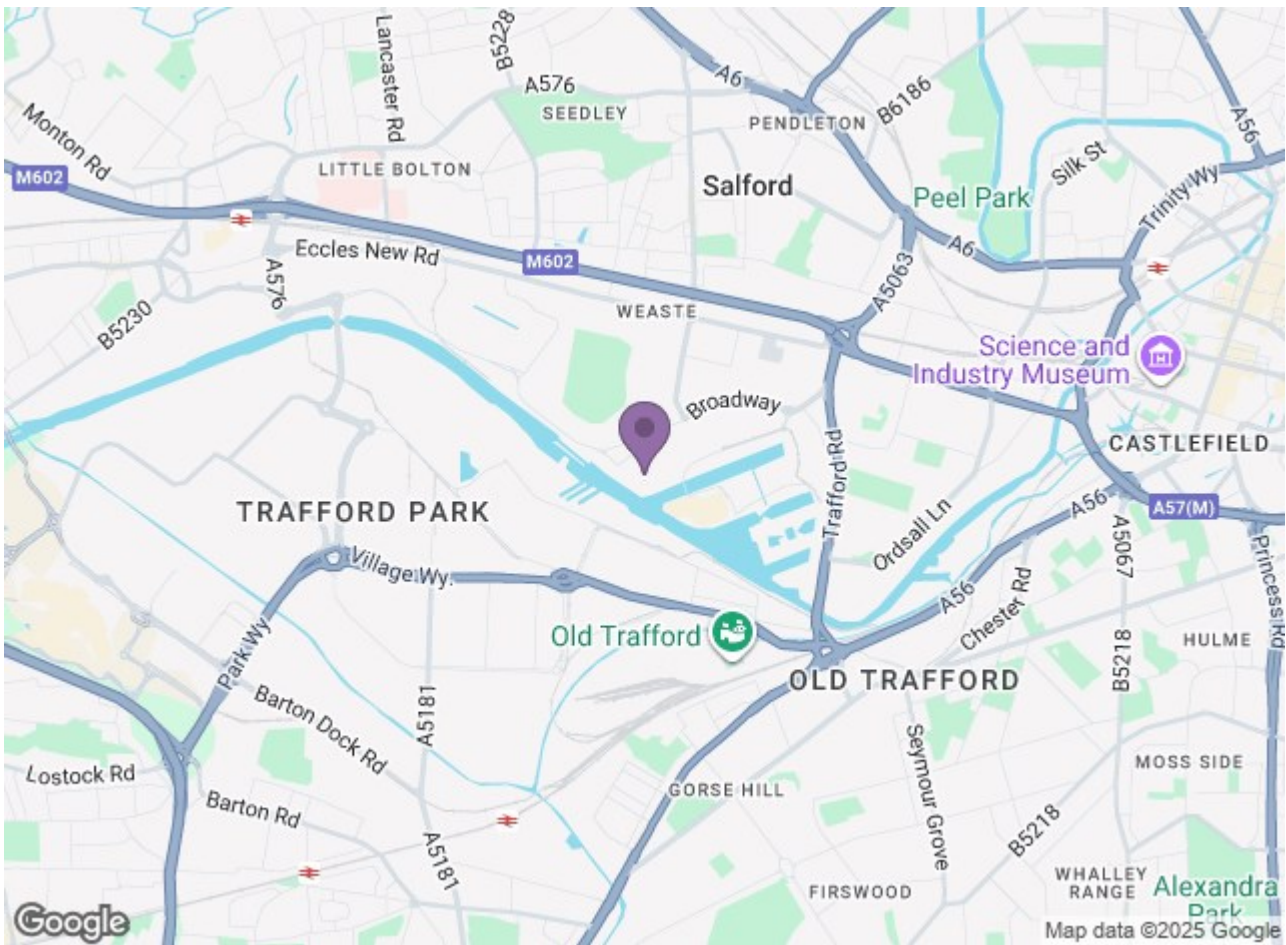
The location really is second to none. Situated in the heart of MediaCityUK, you'll be surrounded by the likes of the BBC, Lowry Arts Centre, Imperial War Museum North, and Manchester United Football Club. Closer to home, you'll have a whole host of cultural and sporting attractions, along with cinemas, theatres and shopping destinations. Not to mention the abundance of bars and restaurants! This really is a dynamic destination.

The apartment offers contemporary styled kitchens and bathrooms, along with a high specification throughout. You will also benefit from a full concierge service, 24-hour security and bike storage. Amenities include: an on-site dentist, cafes, bars and restaurants, a Virgin Active health club, a Metrolink stop for quick and easy access into Manchester, and a 5-acre beautifully landscaped public realm plaza.

Whether you're a working professional, student or sharing couple, the Lightbox is sure to deliver something for everyone.

To register your interest or for more information, don't hesitate to get in touch with our team. Due to the fantastic location and everything the development has to offer, we guarantee this unit won't be on the market for long. Images are for marketing purposes only.





Energy Efficiency Rating		Environmental Impact (CO ₂) Rating	
Current	Potential	Current	Potential
85	85	22	22
<small> A 92-100 B 81-91 C 69-80 D 55-68 E 39-54 F 21-38 G 1-20 </small>		<small> A 1-10 B 11-20 C 21-30 D 31-40 E 41-50 F 51-60 G 61-70 </small>	
England & Wales		England & Wales	